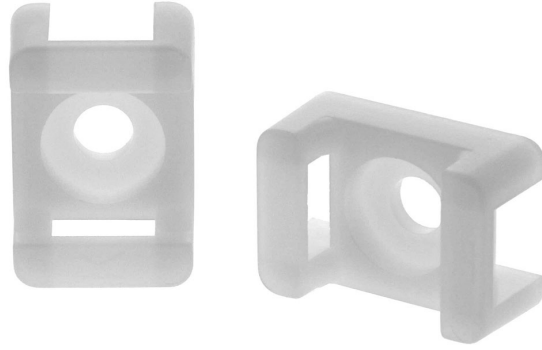


# PRODUCT DATA SHEET

## SCREW MOUNT



### DESCRIPTION

Crochets are often preferred devices in applications for fixing cables.

In addition to collecting and fixing cables, it can also be used for fixing and protecting small diameter pipes.

Screw crochets, which are practical to use, are the most preferred type of crochet in electrical applications.

### FEATURES

- Material : Pure Nylon 6.6 Standard UL
- Operating Temperature : - 40°C --- +85 °C
- Color : White

### MARKINGS

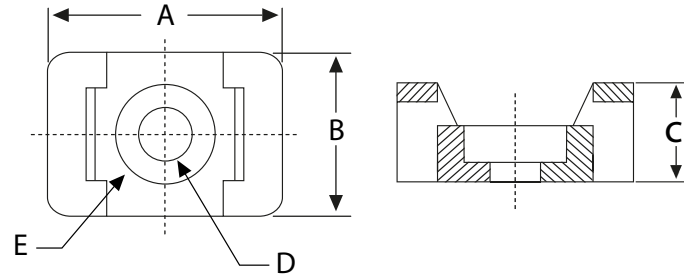


- It complies with RoHS standards.
- It complies with ISO 9001 standards.
- It complies with UL standards.
- It complies with CE standards.

# PRODUCT DATA SHEET

## SCREW MOUNT

### SECTIONS AND DIMENSIONS



PRODUCT CODE	COLOUR	DIMENSIONS					MAXIMUM CLAMPING DIAMETER (mm)
		A	B	C	D	E	
VK V - 1	White	14.9	9.5	6.9	4.5	7.8	4.8
VK V - 2	White	22.2	15.9	9.7	6.4	12.6	7.6